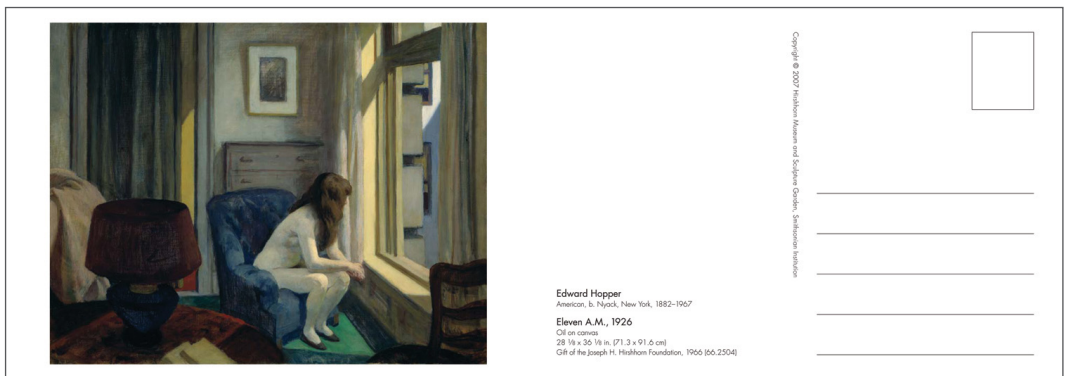
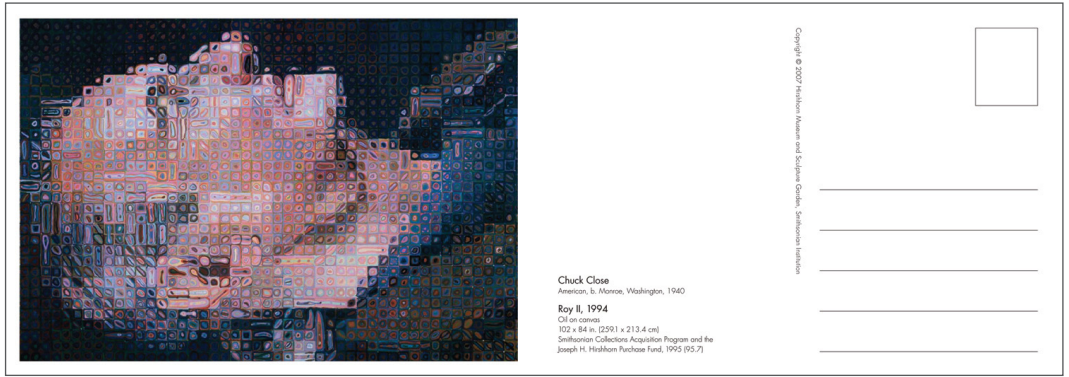


A | D GILES LIMITED
2ND FLOOR
162-164 UPPER RICHMOND ROAD
LONDON, SW15 2SL, UK
T|F | +44 (0)20 8780 5060
M | +44 (0)7971 547155
E | DG@GILESLTD.COM
W | WWW.GILESLTD.COM

- TITLE:** HIRSHHORN 30 POSTCARDS
- AUTHOR:** Edited by Deborah E. Horowitz
- IMPRINT:** GILES in association with the Hirshhorn Museum and Sculpture Gallery
- LIST PRICE:** US\$9.95 /UK£5.95
- PUBLICATION:** September 2007
- ISBN:** 1 904832 24 5 (10 digit); 978 1 904832 24 9 (13 digit)
- SPECIFICATION:** 121mm x 171mm (6 3/4" x 4 3/4"), landscape, 64 pages, printed in 4 colours, hardback
- ILLUSTRATIONS:** 30 colour illustrations
- TEXT:** Brief Introduction; Identifying captions
- MARKET:** All those with an interest modern and contemporary art
- SALES POINTS:**
- Presents 30 beautiful colour postcards of the most significant works from one of the leading museums of modern and contemporary art
 - Includes a brief overview of the collection and history of the museum
 - Features works by leading American and international artists, including Edward Hopper (*Eleven A.M.*, 1926), Joseph Cornell (*Medici Princess*, c1952), Ellsworth Kelly (*Red White*, 1961), Gerhard Richter (*Annunciation After Titian*, 1973), Chuck Close (*Roy II*, 1994), James Turrell (*Milk Run*, 1996), and Ron Mueck (*Untitled (Big Man)*, 2000)
- CONTENTS:** The Hirshhorn Museum and Sculpture Garden is the Smithsonian's museum of modern and contemporary art. Located on the National Mall in the heart of Washington, D.C., the Museum and its collection are the result of the generosity and enthusiasm for art of one man, Joseph H. Hirshhorn (1899–1981). Hirshhorn, who immigrated to the United States from Latvia with his parents at the age of eight, began collecting at an early age. Although originally attracted to traditional nineteenth-century French academic and impressionist painters and sculptors, he discovered that it was the art of the present that he found most exciting and engaging. He became a devotee of contemporary art and eventually donated over 12,000 works to the institution that bears his name.



Established in 1966 as the Hirshhorn Museum and Sculpture Garden, Smithsonian Institution, in 1974 the collection moved to a purpose-built museum designed by Gordon Bunshaft. It is now the primary collection of contemporary art and culture in America, and seeks to enhance public understanding and appreciation of contemporary art through acquisitions, exhibitions, educational programmes and research. Each of the 30 works in this brand new book has been chosen as a highlight of this remarkable collection, and will appeal to art lovers of all ages

AUTHOR:

Deborah E. Horowitz is Editor and Manager of Curatorial Publications at the Hirshhorn Museum and Sculpture Garden

TABLE OF CONTENTS:

Brief overview
Postcards, with captions