

A | D GILES LIMITED
2ND FLOOR
162-164 UPPER RICHMOND ROAD
LONDON, SW15 2SL, UK
T | +44 (0)20 8780 5060
M | +44 (0)7971 547155
E | DG@GILESLTD.COM
W | WWW.GILESLTD.COM

TITLE: LEONARDO DREW: EXISTED

AUTHORS: Edited by Claudia Schmuckli. Essays by Claudia Schmuckli and Allen S. Weiss

IMPRINT: GILES in association with Blaffer Gallery, the Art Museum of the University of Houston

LIST PRICE: US\$59.95 / UK£30.00

PUBLICATION: May 2009

ISBN: 1 904832 58 X (10 digit); 978 1 904832 58 4 (13 digit)

SPECIFICATION: 304mm × 230mm (9" × 12"), portrait, 208 pages, printed in 4 colours, hardback

ILLUSTRATIONS: 110 colour and 35 b & w illustrations

TEXT: Up to 34,000 words, including Preface and Acknowledgments, Essays, Artist interview, Main presentation of works, Selected Biography, Bibliography, Index

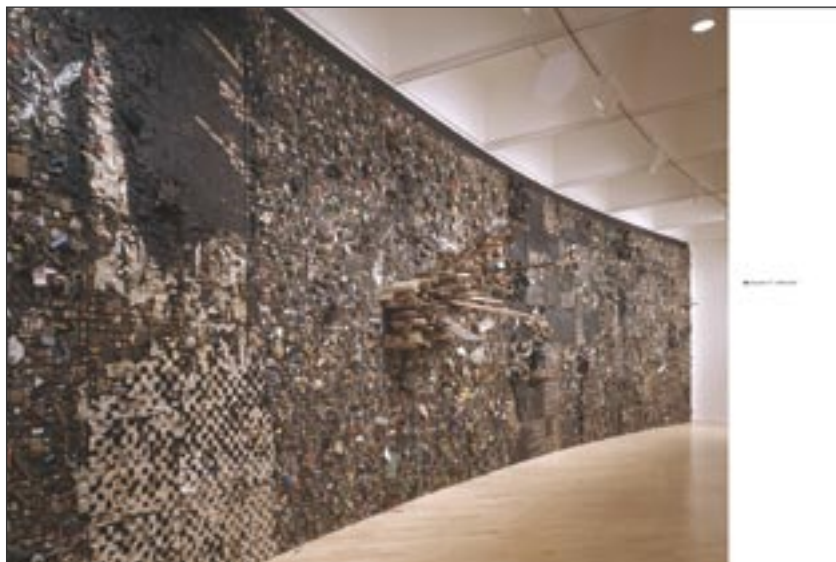
MARKET: Students and scholars of the artist, contemporary art, comparative media and fine art; colleges offering contemporary literature and comparative media courses; galleries; libraries

SALES POINTS:

- Publication accompanies a major exhibition opening at Blaffer Gallery, the University of Houston in May 2009, before travelling to The Parrish Art Museum, Southampton, New York in September 2009
- The first publication to document Drew's artistic development since 1991 in over 90 works, including 12 recent works and a new piece commissioned for the exhibition
- Features scholarly essays that interpret Drew's career and his place within the broader context of contemporary art, an annotated chronology, selected biography and bibliography

CONTENTS: Throughout his career Drew has been continuously engaged with the personal trajectory of cultural memory. Made to resemble the detritus of everyday life, his formally abstract but emotionally charged compositions combine qualities of painting and sculpture. They transcend any specific historic and ethnic reference giving his work a unique aesthetic authority that is deeply embedded in the theory and practice of mid-twentieth-century abstraction.

In 2004 Drew began to create sculptures made from paper replicas of his collection of cast-off items that have repeatedly constituted the material source for



his works, creating a new visual poetry of lightness and simplicity, culminating most recently in his installation *Number 123* (2006).

This brand new volume presents a new installation conceived for the exhibition, in which Drew combines materials and drawing in space to create his grandest and most ambitious piece to date. This new installation is complemented by over 90 selected paintings realized between 1991 and 2005, and recent works on paper made between 2005 and 2008, which offer a representative survey of Drew's artistic development as well as speaking to the relevance of the direction that his work is taking.

AUTHORS:

Claudia Schmuckli is Curator of Blaffer Gallery, the Art Museum of the University of Houston, before which she was assistant curator at The Museum of Modern Art, New York. Her most recent project for the Blaffer was *Amy Sillman: Suitors & Strangers* (2007). Past exhibitions include *Katrina Moorhead: A Thing Called Early Blur* (2007) and *Urs Fischer: Mary Poppins* (2006);

Allen S. Weiss is Associate Adjunct Professor, Performance Studies and Cinema, New York University. Recent publications include *Breathless: Sound Recording, Disembodiment, and the Transformation of Lyrical Nostalgia* (2002) and *Feast and Folly: Cuisine, Intoxication, and the Poetics of the Sublime* (2002)

TABLE OF CONTENTS:

Foreword and Acknowledgments

Being and Somethingness by Claudia Schmuckli

Dust to Dust by Allen Weiss

Artist interview

Annotated chronology

Main illustrated section presenting colour plates of Drew's most recent works featured in the exhibition, presented in chronological order with brief captions

Selected biography

Select Bibliography

Index