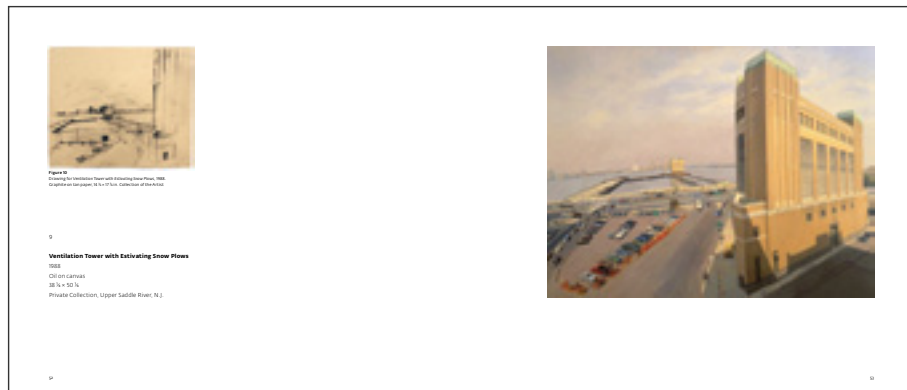
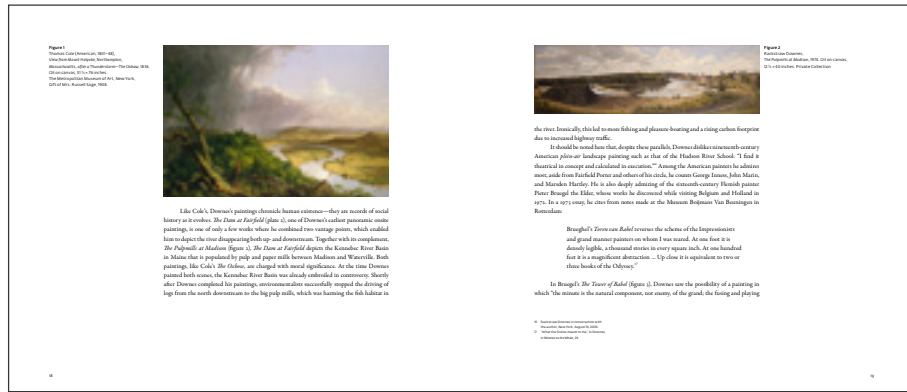


- TITLE:** **RACKSTRAW DOWNES**
Onsite Paintings, 1972–2008
- AUTHORS:** Klaus Ottman. With an essay by Sarah Rothenberg and an interview with the artist by Terrie Sultan
- IMPRINT:** GILES in association with the Parrish Art Museum
- LIST PRICE:** US\$39.95/UK£24.95
- PUBLICATION:** June 2010
- ISBN:** 1-904832-73-3 (10 digit); 978-1-904832-73-7 (13 digit)
- SPECIFICATION:** 240 × 280 mm (11 × 9 ½ in.), landscape, 112 pages, printed in 4 colours, hardback
- ILLUSTRATIONS:** 46 colour illustrations
- TEXT:** Up to 20,000 words, including Preface and Acknowledgements, essay by Klaus Ottmann; Essay by Sarah Rothenberg; Main presentation of 25 individual artwork entries; Interview with the artist; Bibliography
- MARKET:** Students and scholars of the artist, contemporary art, comparative media and fine art; students and colleges of contemporary literature and media; galleries; libraries
- SALES POINTS:**
- A major survey of the work of this important contemporary artist from his first works to his most recent paintings
 - Publication coincides with an exhibition at the Parrish Art Museum, Southampton, New York, June 20-August 8, 2010
 - Features a fascinating new interview with the artist
- CONTENTS:** *Rackstraw Downes: Onsite Paintings, 1972–2008* is the first significant survey exhibition of the work and methods of the British-born, Texas- and New York-based “realist” panoramic painter, and features 25 works, from Downes’ earliest work, *Dunhams Farm Pond* (1972) through major examples of painting done in Maine, Texas, New York City and along the New Jersey shorelines.

Downes’s panoramic paintings, which he developed by studying seventeenth-century Dutch landscape painting, possess a unique balance between realism and abstraction, timelessness and history. Painted from observation on site, they are not “snapshots” of a scene recreated in the studio; rather, they are chronicles of the human experience— records of social history as it evolves.



This volume is a comprehensive compendium of the artist's career, from his current work to pieces that track the growth and development of his themes and concepts over three decades, and will contribute to the discourse concerning the changing nature of painting in the 21st century.

AUTHORS:

Klaus Ottmann is Robert Lehman Curator, the Parrish Art Museum. His most recent publications include *Yves Klein: Works/Writings/Interview* (2009) and *Thought Through My Eyes: Writing About Art 1984–2004* (2005). **Sarah Rothenberg** is an internationally acclaimed solo and chamber pianist and has served as artistic director of Da Camera, Houston since 1994. She is a frequent performer on Lincoln Center's *Great Performers* series in New York. Her productions for Da Camera include *Epigraph for a Condemned Book*, (2006), and *St Petersburg Legacy* performed the New Haven International Festival of Arts (2006). **Terrie Sultan** is Director of the Parrish Art Museum. She was director and chief curator of Blaffer Gallery from 2000–8, and curator of contemporary at the Corcoran Gallery of Art from 1988–2000. She has organized numerous exhibitions featuring artists of national and international scope, including *Damaged Romanticism: A Mirror of Modern Emotion*, *Chuck Close Prints: Process and Collaboration*, *Jessica Stockholder: Kissing the Wall, Works 1988–2003*, and *James Surls: The Splendor Years, 1977–1997*.

TABLE OF CONTENTS:

- Introduction and Acknowledgments by Terrie Sultan
- The Verity of Art: Rackstraw Downes's Onsite Paintings* by Klaus Ottmann
- Essay by Sarah Rothenberg
- Plates
- Rackstraw Downes Interview* with Terrie Sultan
- Bibliography
- Photo Credits